

Open data maturity

2019



Portugal

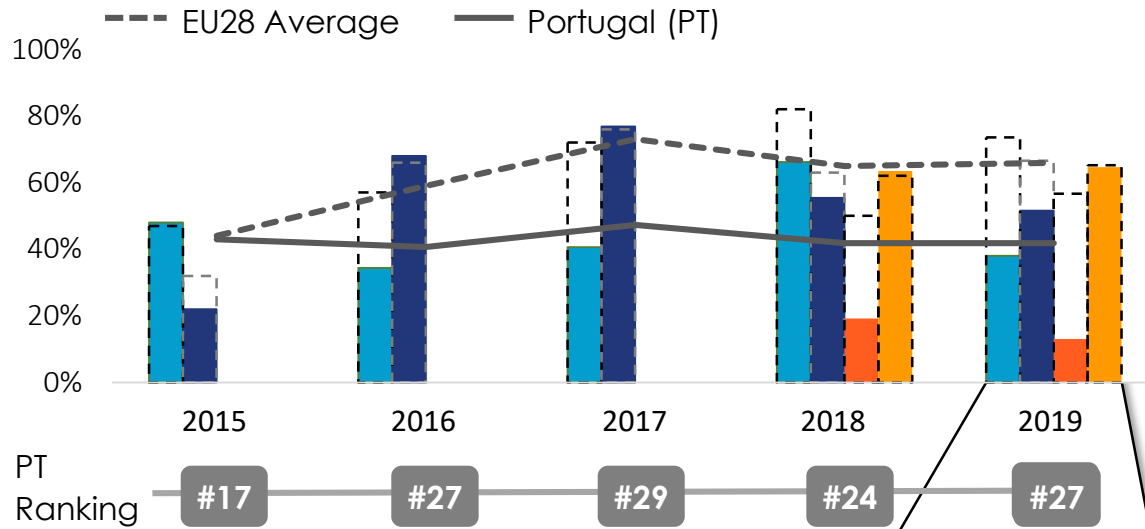


State-of-Play on open data - 2019

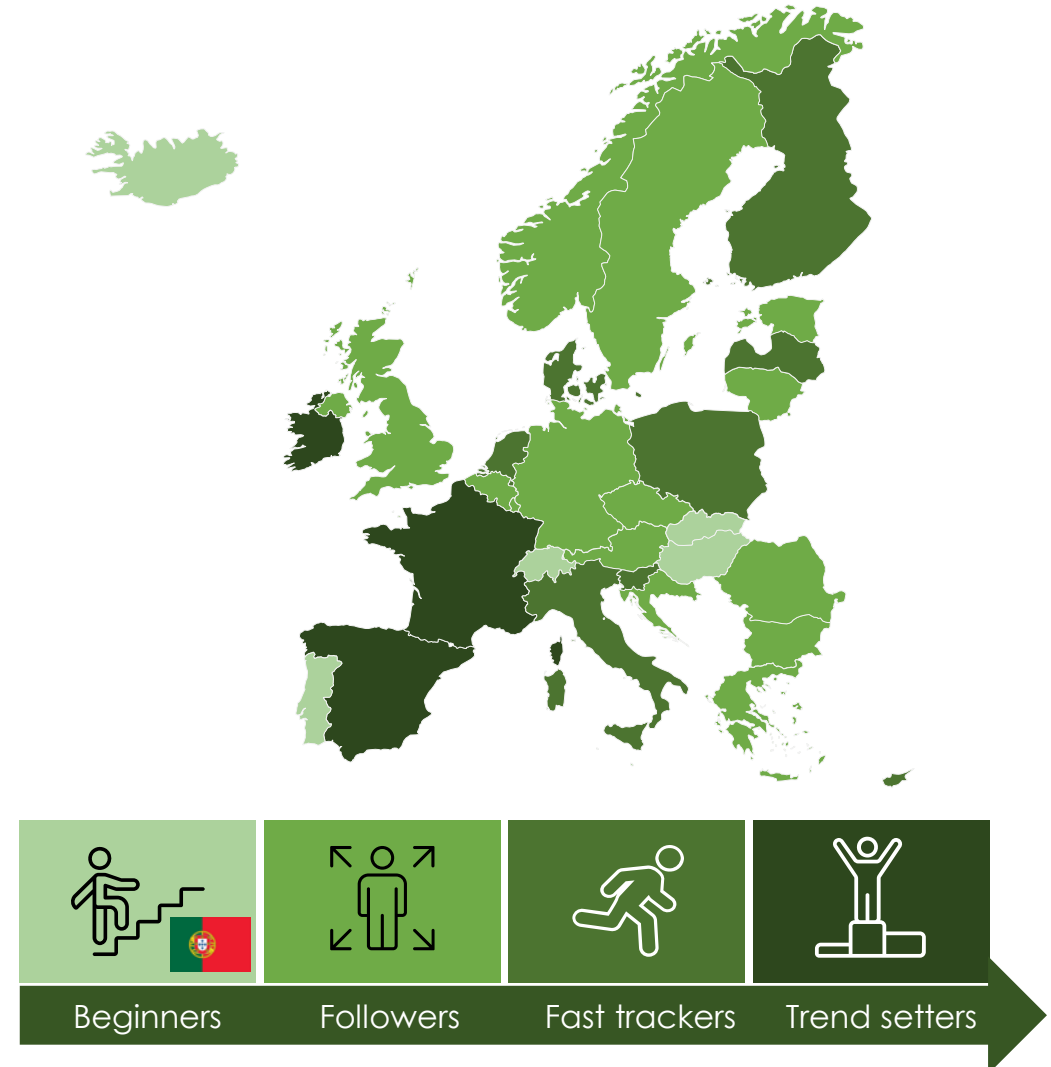
Portugal



MATURITY LEVEL RATING



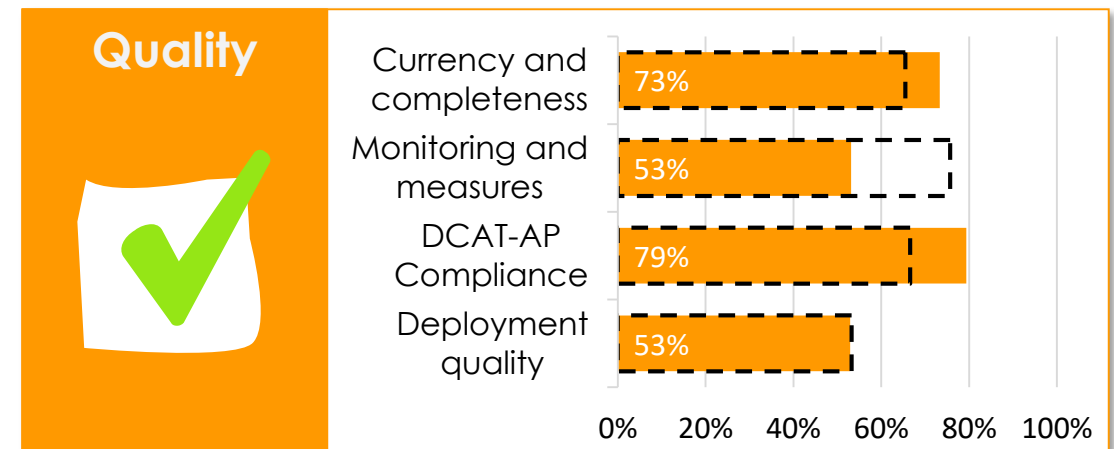
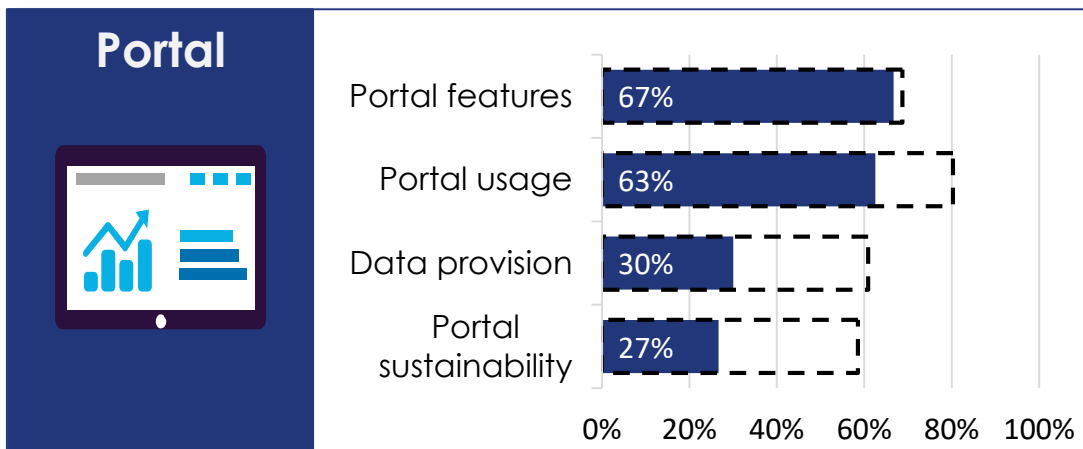
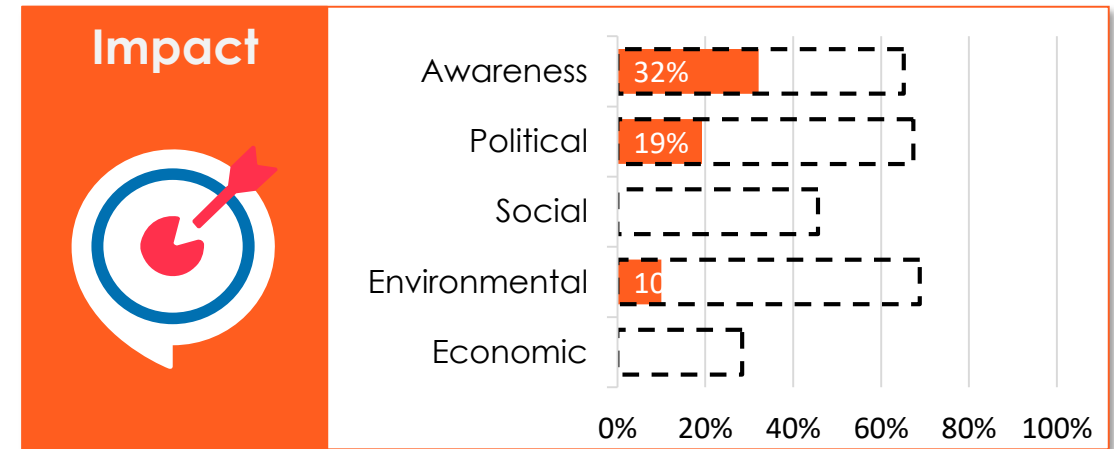
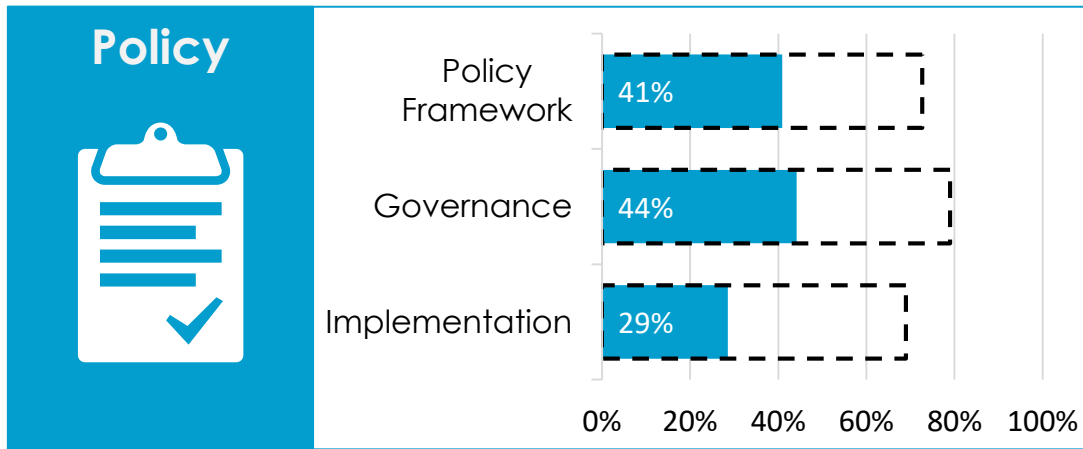
OVERALL MATURITY LEVEL SEGMENTATION



Category	Rank	PT %	EU %
Policy	#29	38%	74%
Portal	#25	52%	67%
Impact	#29	13%	57%
Quality	#17	65%	65%
Overall		42%	66%



DIMENSION PERFORMANCE



EU28 Average
 X %
 Portugal



ADDRESSING BARRIERS



Organisational

There is a need in Portugal to implement procedures to systematically upload, publish and ensure the persistence of datasets, particularly for municipal services, enabling the data to be more accessible and reliable.



Technical

Portugal faces some difficulties in making all data available in formats that are truly open. Many public sector bodies still use their proprietary formats which hinder re-use.

Portugal also intends to improve the national portal's user interface to make it easier for users to access open data published through API's.



OPEN DATA RE-USE

Open data re-use by public bodies in Portugal is not yet defined as a priority at national level. There is a trend in public bodies to explore and better exploit opportunities to re-use their own data, but this effort is still very limited. It is unclear if public bodies in Portugal conduct activities to monitor and boost the re-use of their data.

A few civil society initiatives and projects use open data to tackle different political and social issues. An example is [The Transparency Hackday Portugal](#): a working group focusing on data freedom and access to public information, enabling tools to be built that empower citizens and society.

The national open data portal of Portugal provides a [designated area](#) to showcase open data use cases. However, only a few use cases are listed (6 as of October 2019). The European Data Portal's own use case section provides additional [open data use cases from Portugal](#).

An example of these is [Fogos](#), that maps fire incidents in Portugal. On this map, users can see the intensity of a fire, a twitter feed about the fire, weather data of the affected area, a timeline of the fire outbreak, as well as dates about the scope of the deployment of the fire brigade (number of people and firefighting vehicles). The platform complements the national risk prevention activities and contributes to the management of fire risk in the country's forests.